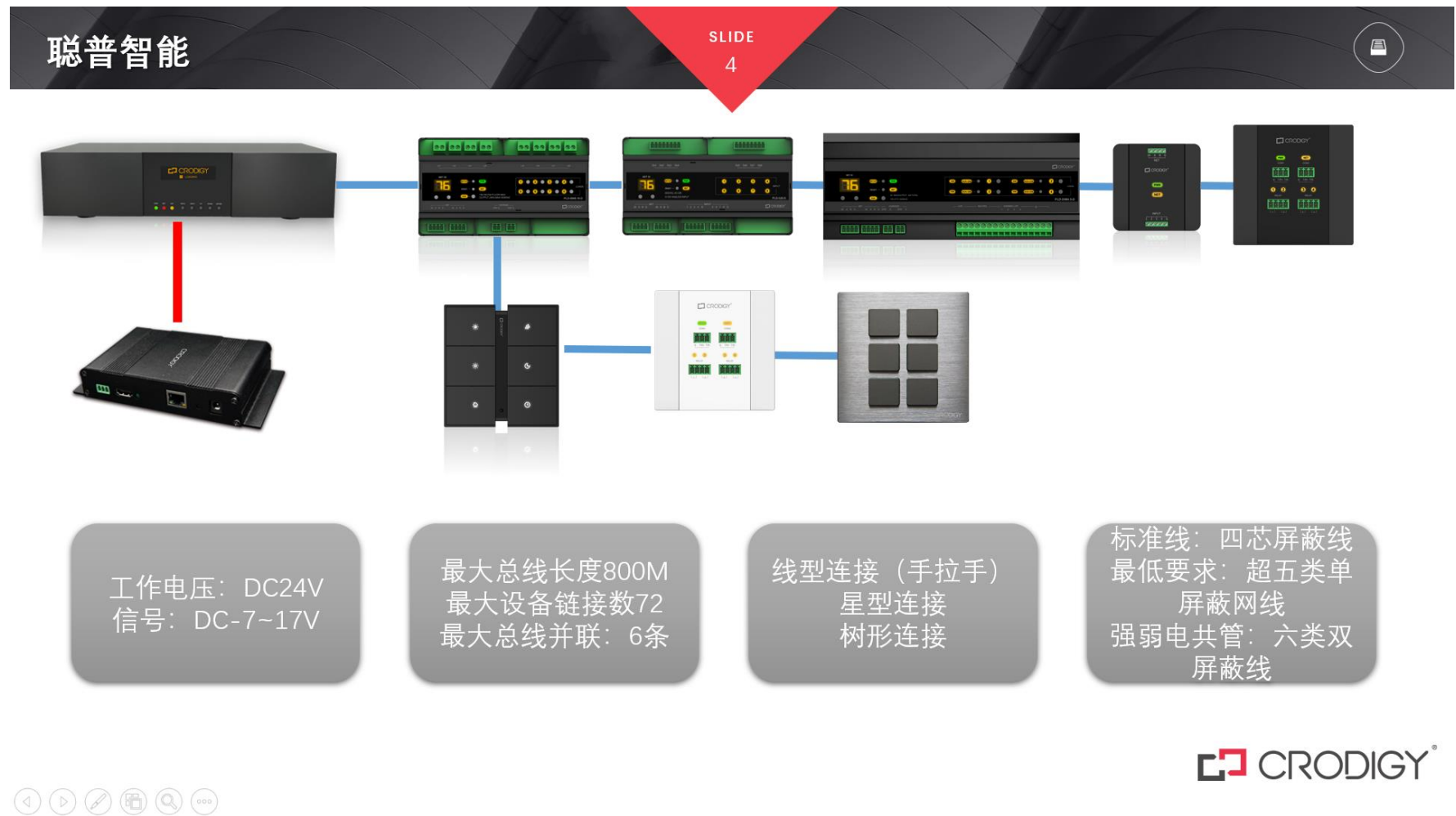
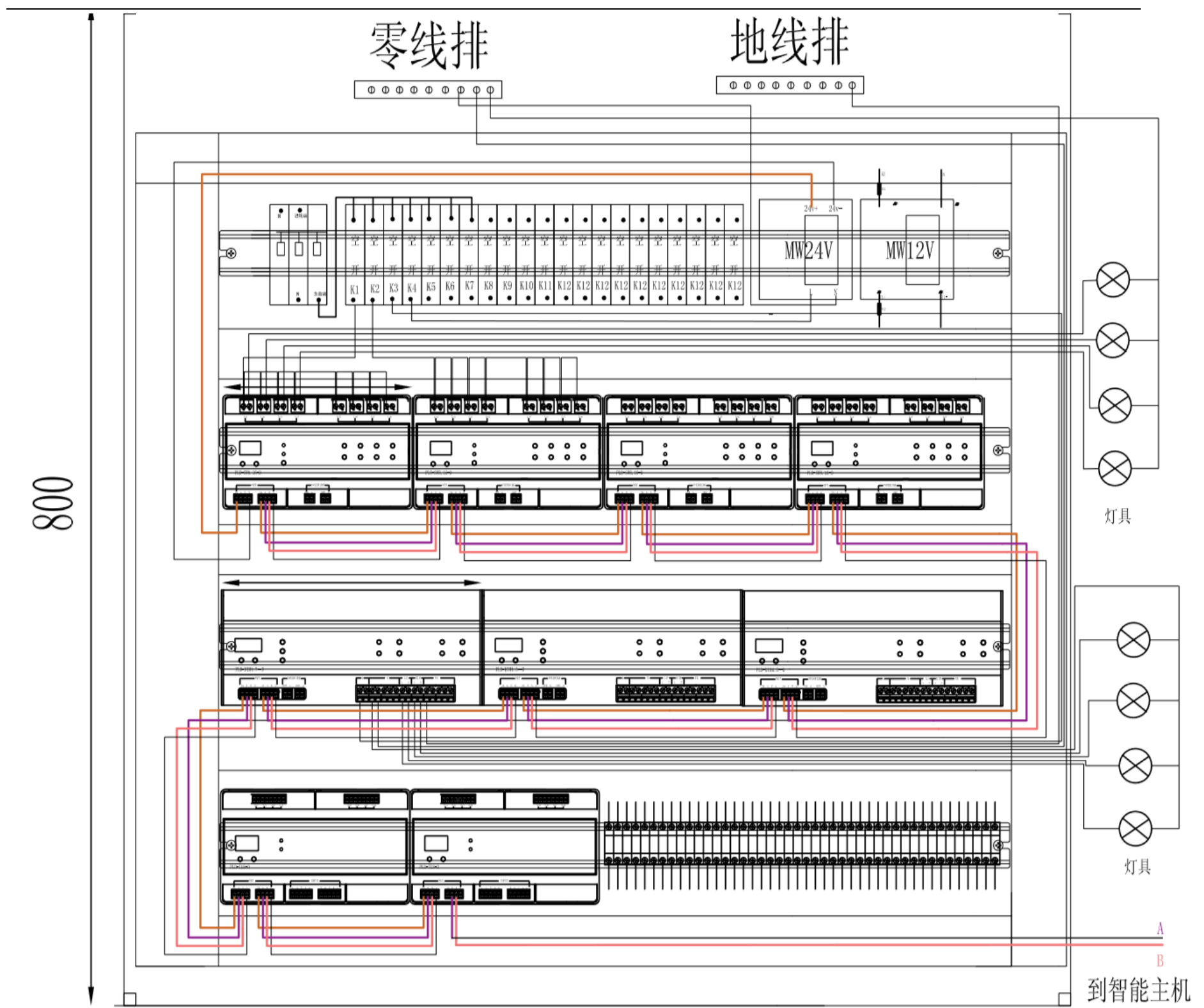


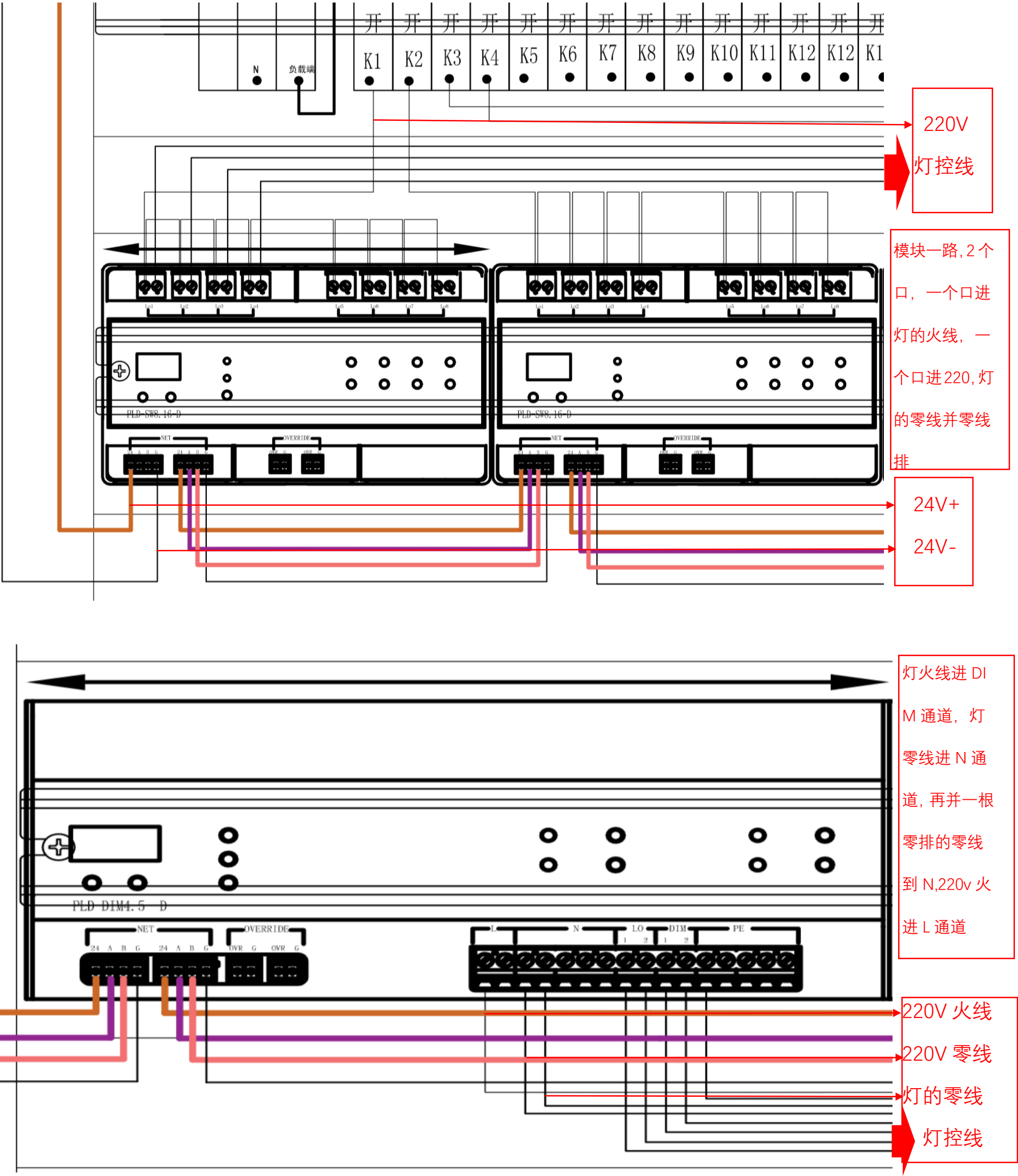
聪普系统接线说明

1.聪普设备连接系统图如下所示

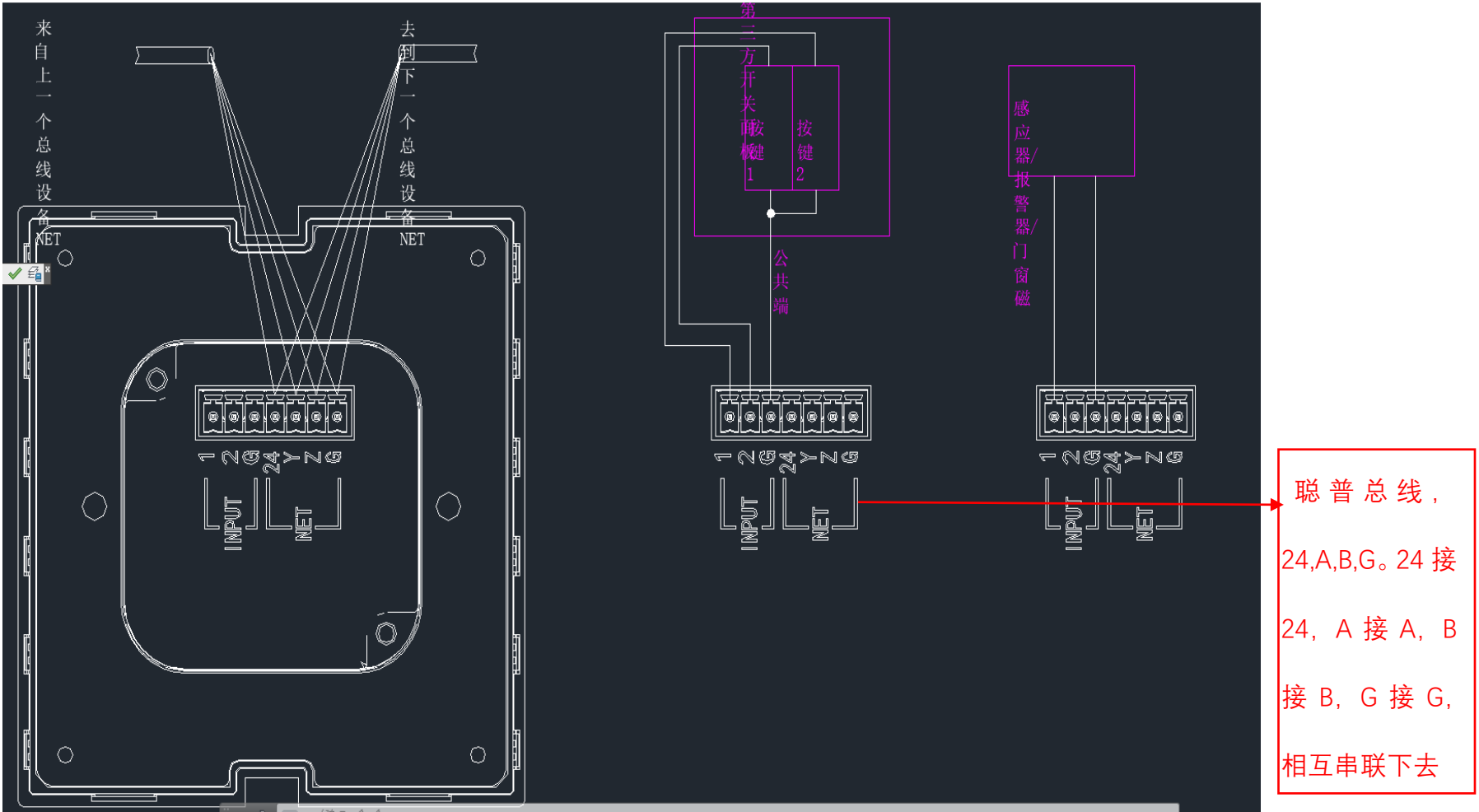




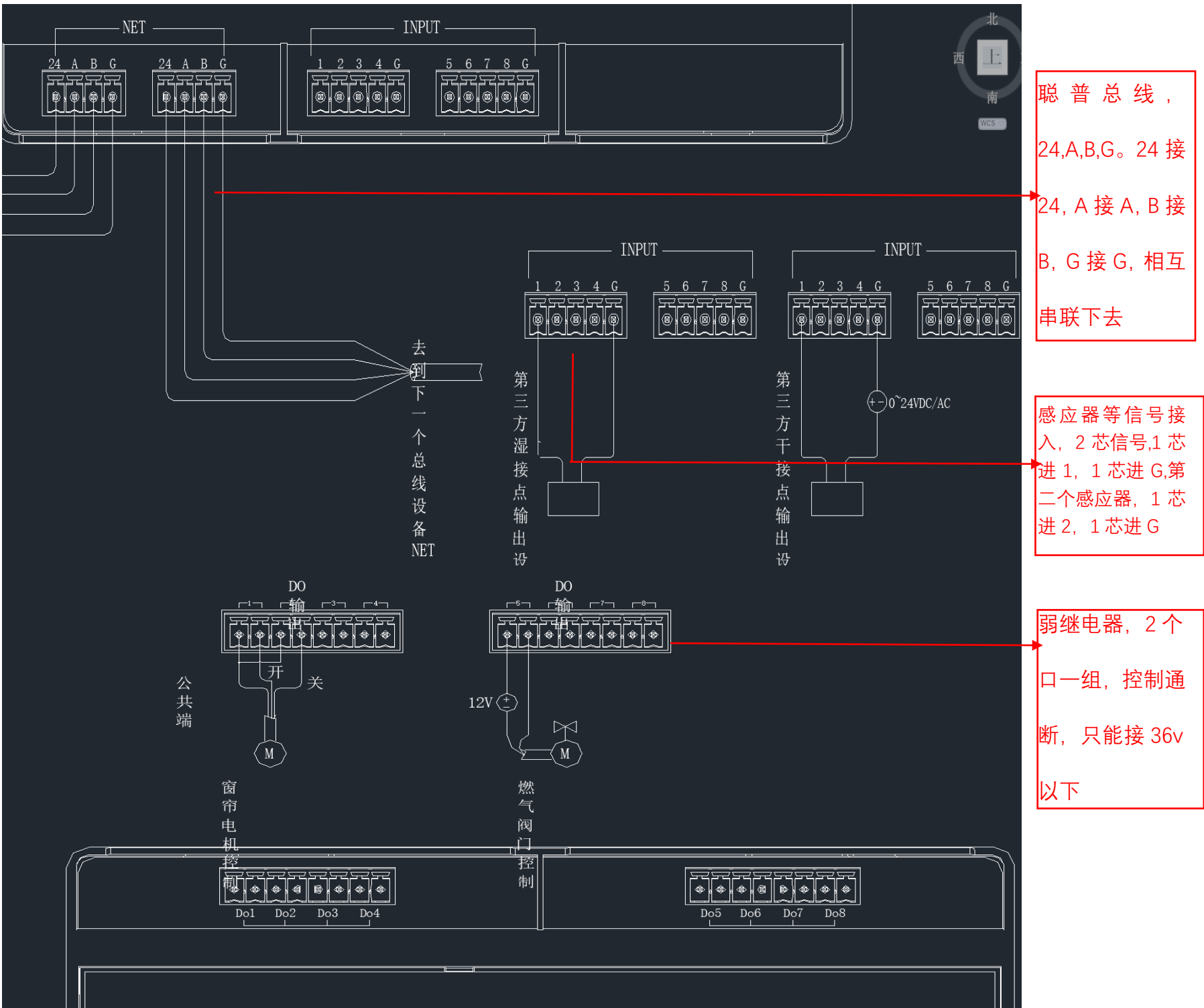
其中部分细节展示



3.面板接线图



4.IU8 接线



The diagram illustrates the PLD-RY4.485-E control unit and its application in window motor control. The unit is shown with four terminal blocks: COM1, COM2, RELAY, and RELAY. Each block has four terminals. The wiring diagram shows the following connections:

- COM1:** Terminal 1 (G) is connected to the ground (G) of the window motor control unit. Terminal 2 (TR+) is connected to the common terminal (COM) of the window motor control unit. Terminal 3 (TR-) is connected to the stop terminal (A) of the window motor control unit. Terminal 4 (TR-) is connected to the ground (G) of the window motor control unit.
- RELAY:** The common terminal (COM) is connected to the common terminal (COM) of the window motor control unit. The stop terminal (A) is connected to the stop terminal (A) of the window motor control unit. The start terminal (B) is connected to the start terminal (B) of the window motor control unit. The ground terminal (G) is connected to the ground (G) of the window motor control unit.

The window motor control unit is shown with four terminals: COM, A, B, and G. The motor (M) is connected to the common terminal (COM) and the stop terminal (A). The start terminal (B) is connected to the ground (G).

电视/TV

HDMI (视频源)

HDMI 一分二接头

HDMI (视频源)

插座

IN PUT

溢彩模块

IN ET

RGB跑马灯带 《8米

说明：溢彩模块与灯带直接的线最好不要超过2米

7.溢彩模块

